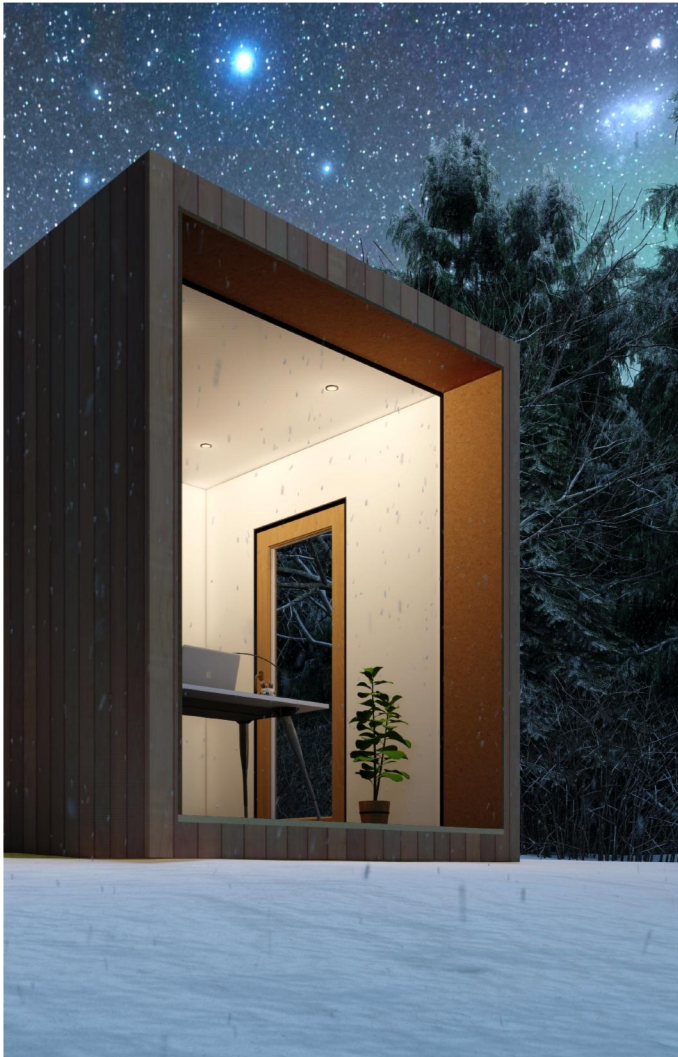


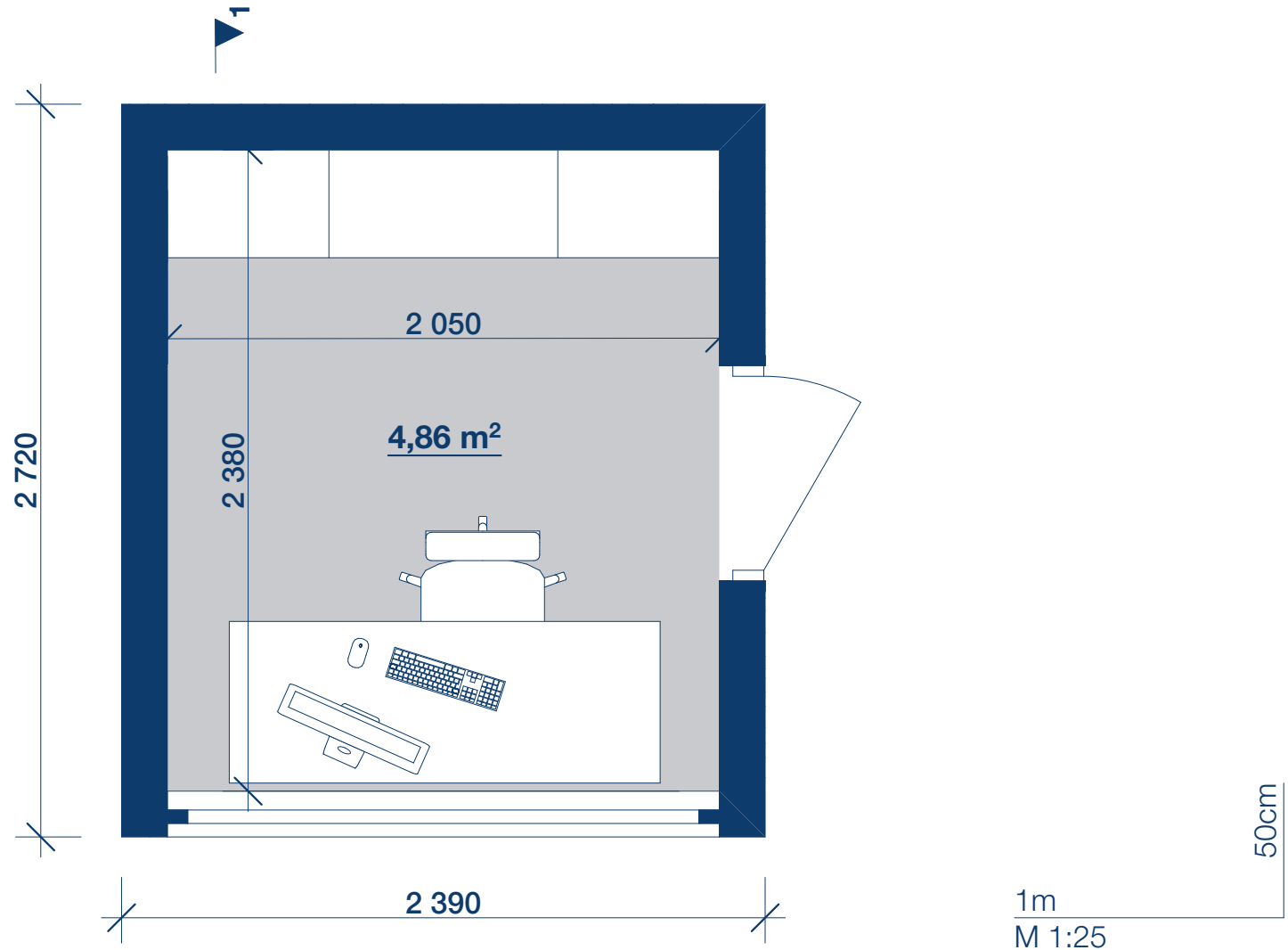
## Office Box

Total area - 4,86 m<sup>2</sup>  
External dimensions - 2,72x2,39 m  
Height - 2,84 m  
Weight - 1,0 t



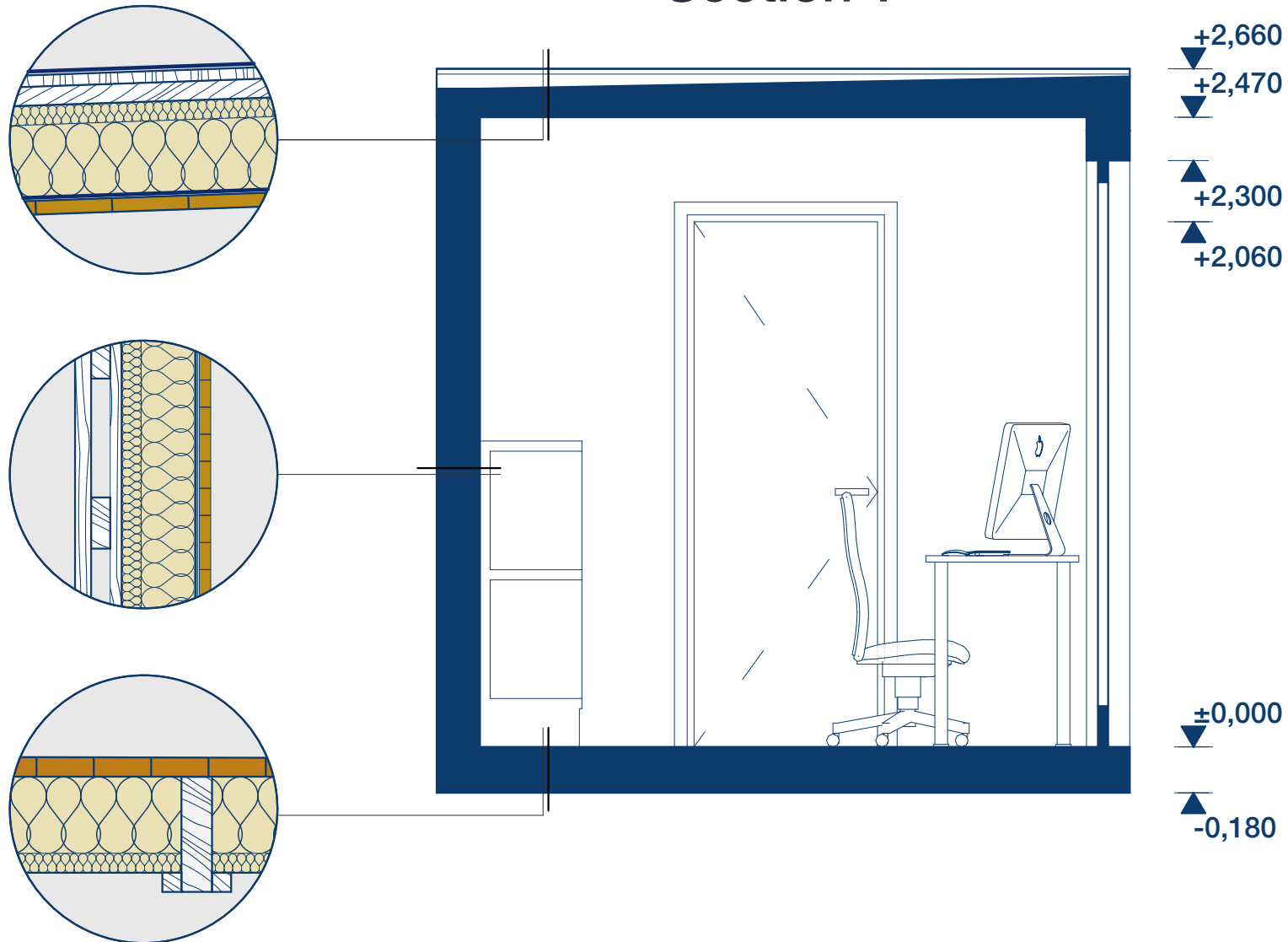
# Floor plan

Total area - 4,86 m<sup>2</sup>



Roof pitch - 2°  
Height - 2,84 m

# Section 1



## Ecological and durable materials

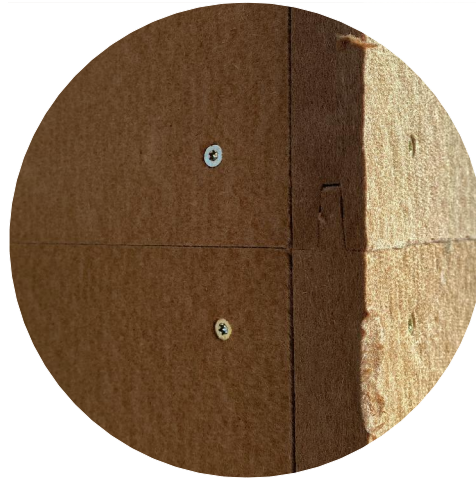
We produce houses from ecological materials **using wood and wood-based materials**. We do not use films, which means our homes do not require additional conditioning and recovery.



### House frame

The entire roof and wall frame of the house is **made of wood C24** (pine).

The size of the beams used is based on strength calculations and to ensure stability of the structure.



### House insulation

**Wood fibre board**  $\lambda=0,045$   
It is made from 100% wood fibers mixed pressed into dense panels.

**Cellulose insulation**  $\lambda=0,036$   
It is made from recycled paper waste.



### Exterior finish

**Wall finishing** - a board painted or treated with eco-friendly compounds for wood (color to choose).

**Roofing material** - classic metal roofing covering.



### Interior fitting

**100% clay** without harmful chemical compounds. 16 natural shades to choose from.

**or a painted board** painted or treated with eco-friendly compounds for wood.